

D-LAB 3.50: EYE TRACKING WITH TOBII PRO GLASSES 2

Visual Quick Start Guide

1

Software Installation

Download the D-Lab 3.50 setup from Ergoneers FAQ and attach your license dongle.

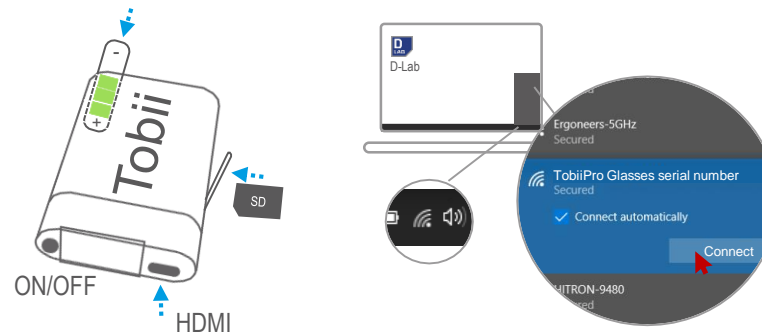


D-Lab license dongle

2

Prepare & connect Tobii Pro Glasses 2

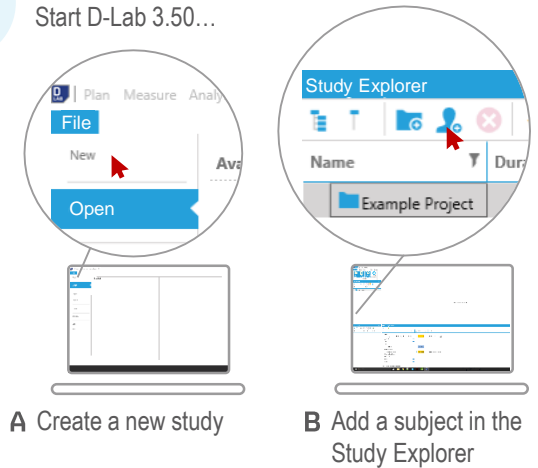
Insert a charged battery, a SD card and connect the glasses to the Tobii Recording Unit with the HDMI cable. Press and hold the power button for 3 seconds and connect the computer to the glasses WiFi. For more information see the [Tobii Quick Start Guide](#)



3

Create a study in D-Lab

Start D-Lab 3.50...

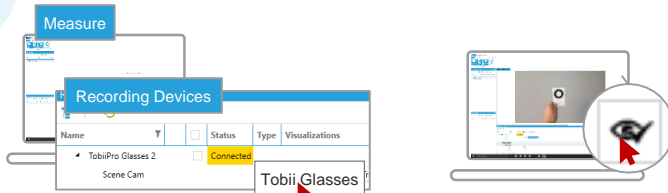


A Create a new study

B Add a subject in the Study Explorer

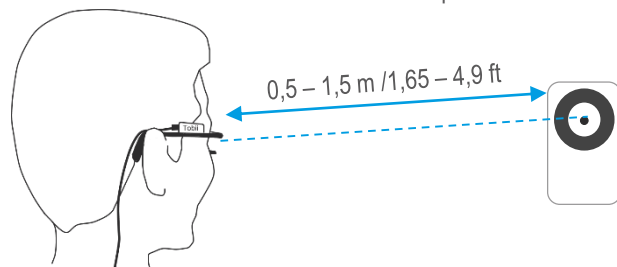
4

Calibrate a subject



A Go to Measure Mode and open a visualization of Tobii Pro Glasses 2

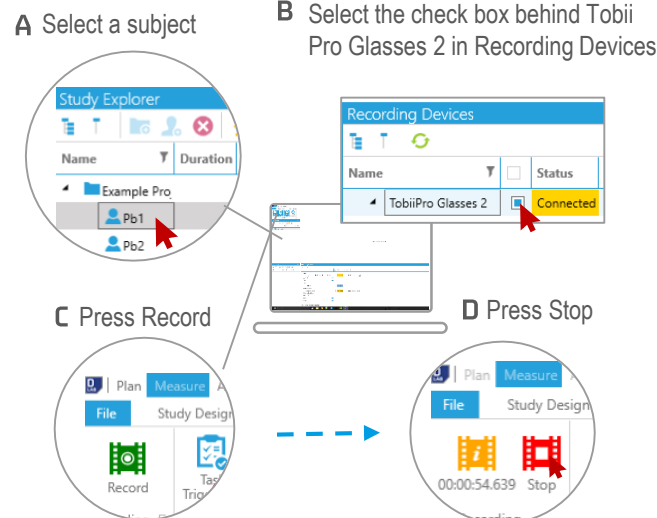
B While subject focuses on center point of Tobii Calibration Card, press the calibration button



5

Start & Stop a recording

If calibration is successful...



A Select a subject

B Select the check box behind Tobii Pro Glasses 2 in Recording Devices

C Press Record

D Press Stop

6

Import remote data

A Press and hold the power button of Tobii Recording Unit for 10s to turn it off.

B Remove SD card and insert it to D-Lab computer.

C Go to Analyse Mode and press download remote data

